

**Proposed Office Building**

Richland South  
 Route 315  
 Plains Twp., PA  
 March 23, 2010  
 Scale 1/8"=1'-0"

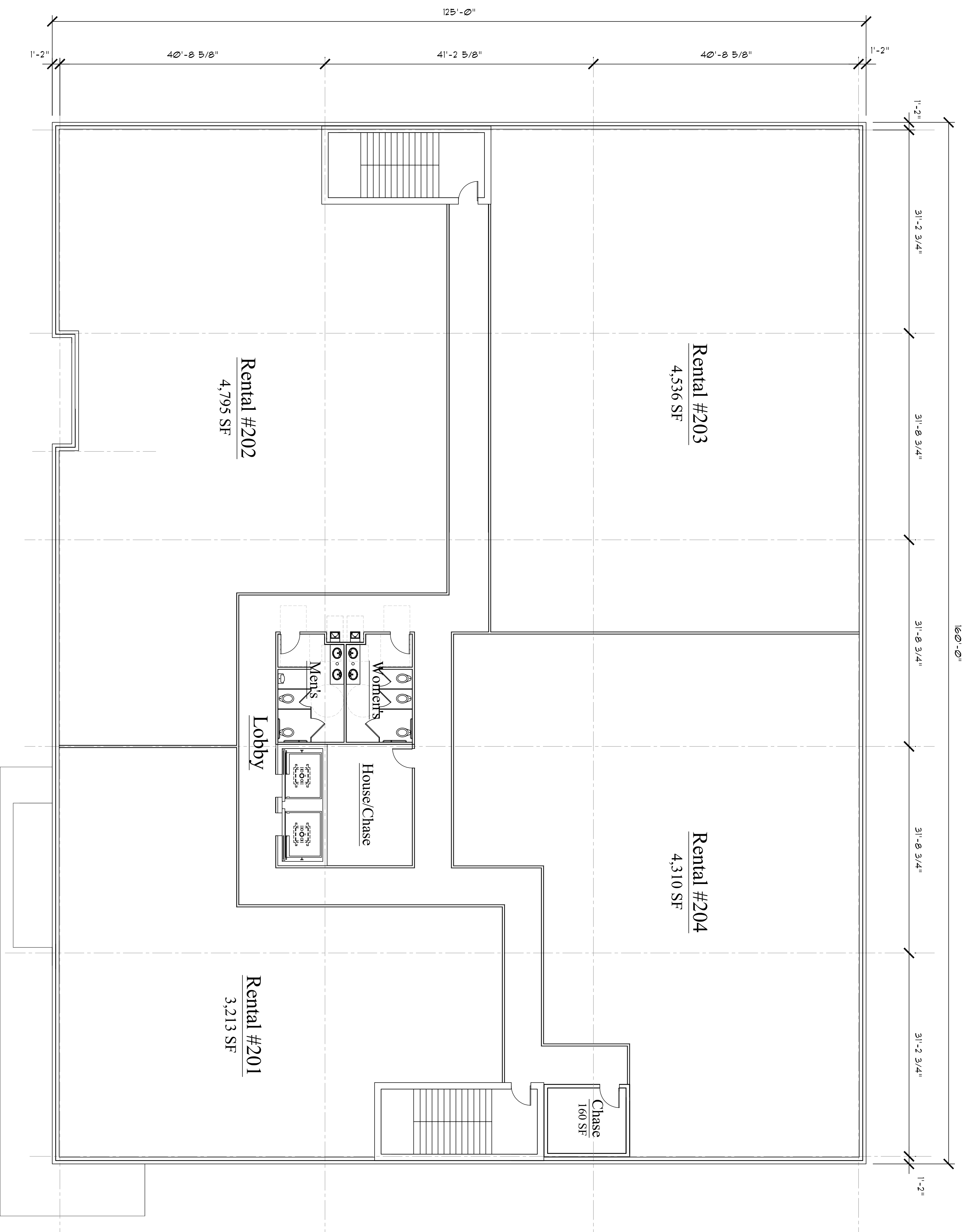
**First Floor Plan (Alternate)**

First Floor Area = 20,084 SF  
 Common Area = 3,107 SF



**Murray, Jay, Miller & Associates**

Site: 300 138 South Main Street, Wilkes-Barre, Pennsylvania 18701-1601  
 (570) 822-4141 Voice (570) 822-4546 Fax info@murrayjmillerc.com E-mail www.murrayjmillerc.com Website



## 2nd & 3rd Floor Plan (Alternate)

Second Floor Area = 19,951 SF  
Common Area = 2,325 SF

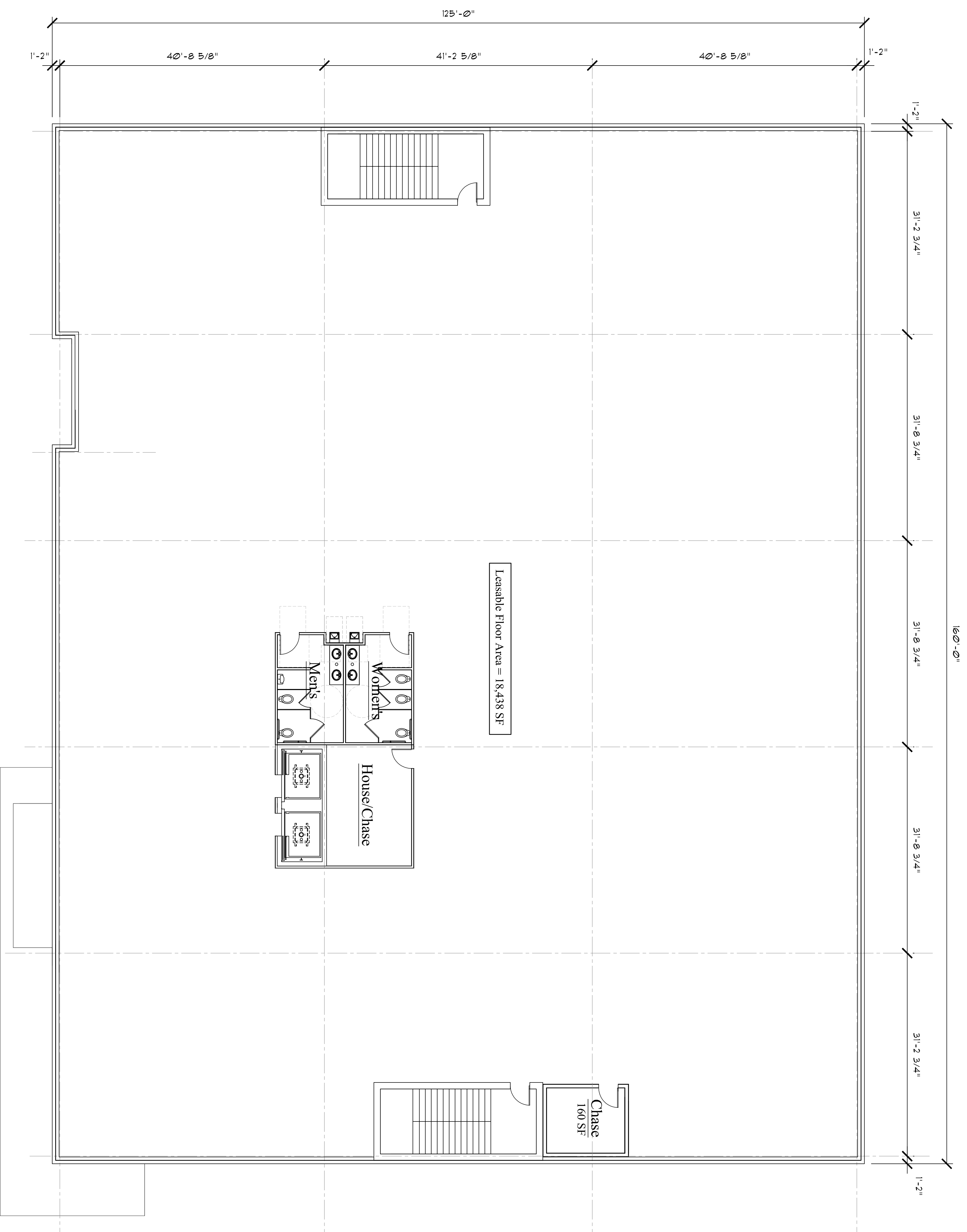
## Proposed Office Building

Richland South  
Route 315  
Plains Twp., PA  
March 23, 2010  
Scale 1/8"=1'-0"



Murray Miller

Site 300 138 South Mohr Street Wilkes-Barre, Pennsylvania 18701-1601  
(570) 822-4141 Voice (570) 822-4546 Fax info@murraymiller.com E-mail www.murraymiller.com Website



## 2nd & 3rd Floor Plan (Alternate)

Floor Area	= 18,438 SF
Common Area	= 1,513 SF
<b>Total</b>	<b>= 19,951 SF</b>

# Proposed Office Building

Richland South  
 Route 315  
 Plains Twp., PA  
 November 3, 2010  
 Scale 1/8"=1'-0"



**Murray Miller**  
 ARCHITECTS

Suite 300 138 South Mohr Street Wilkes-Barre, Pennsylvania 18701-1801  
 (570) 822-4141 Voice (570) 822-4546 Fax info@murraymiller.com E-mail www.murraymiller.com Website